

Pressure transmitter for low pressure applications Model SL-1

WIKA Data Sheet PE 81.36

Applications

- Filter technology
- Blowing machines for glass and plastics industry
- Heating, ventilation and air-conditioning

Special Features

- Pressure ranges from 0 ... 25 mbar to 0 ... 60 mbar
- Various industrial standard signal outputs
- Wiring with connector, flying leads or Snap Cap
- Ingress protection up to IP 67



Fig. Pressure transmitter SL-1

Description

This pressure transmitter has been designed for the measurement of ultra-low pressures with dry, gaseous and non-aggressive media.

It stands out for its high accuracy as well as its rigid and compact design.

This transmitter is available in many variations, since numerous combinations of different industrial standard signal outputs and electrical connections are possible.

Design

The rugged case is made of stainless steel and provides according to the electrical connection an ingress protection up to IP 67.

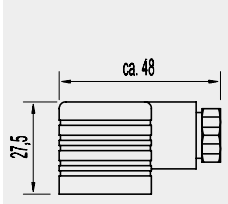
The pressure transmitters can be supplied with a non-stabilised direct voltage of 10 (14) ... 30 V and provide all commonly used output signals.

Specifications		Model SL-1		
Pressure ranges	mbar	25	40	60
Over pressure safety	mbar	500	500	500
Burst pressure	mbar	1000	1000	1000
Type of pressure		Relative pressure {compound ranges}		
Materials				
■ Wetted parts		Stainless steel, silicium, aluminium, gold, silicone		
■ Case		Stainless steel		
■ Snap Cap		Polyamide		
Power supply U_B	DC V	$10 < U_B \leq 30$ (14 ... 30 with output signal 0 ... 10 V)		
Signal output and maximum load R_A		$4 \dots 20$ mA, 2-wire $R_A \leq (U_B - 10 \text{ V}) / 0.02 \text{ A}$ with R_A in Ohm and U_B in Volt $0 \dots 20$ mA, 3-wire $R_A \leq (U_B - 3 \text{ V}) / 0.02 \text{ A}$ with R_A in Ohm and U_B in Volt {0 ... 5 V, 3-wire} $R_A > 5 \text{ kOhm}$ {0 ... 10 V, 3-wire} $R_A > 10 \text{ kOhm}$ {other signal outputs on request }		
Adjustability zero/span	%	± 10		
Accuracy *)	% of span	≤ 0.5 (limit point calibration)		
	% of span	≤ 0.25 (BFSL)		
Hysteresis	% of span	≤ 0.1		
Repeatability	% of span	≤ 0.1		
1-year stability	% of span	≤ 0.3 (at reference conditions)		
Permissible temperature of				
■ Medium	°C	-30 ... +80	-22 ... +176 °F	
■ Ambient	°C	-20 ... +80	-4 ... +176 °F	
■ Storage	°C	-40 ... +80	-40 ... +176 °F	
■ Compensated	°C	0 ... +80	0 ... +176 °F	
Temperature coefficients in compensated temp range				
■ Mean TC of zero	% of span	25 mbar: 0.5 / 10 K	40 mbar: 0.4 / 10 K	60 mbar: 0.3 / 10 K
■ Mean TC of range	% of span	≤ 0.3		
CE -conformity		89/336/EWG interference emission and immunity see EN 61 326		
Wiring protection		Protected against polarity crossing, overvoltage and short circuiting		
Ingress protection per IEC 60529 / EN 60529		See Page 3		
Weight	kg	Approx. 0.3		

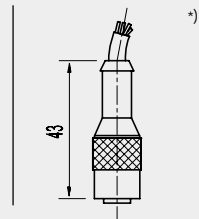
*) Calibrated in vertical mounting position with lower pressure connection

Dimensions in mm

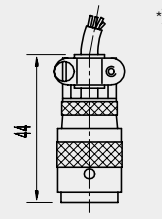
L-Connector per
DIN EN 175301-803,
IP 65
Code: A4



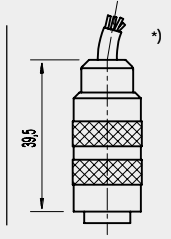
Circular connector
M 12x1, IP 67
Code: M4



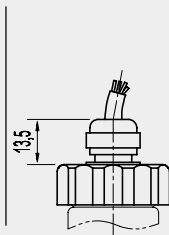
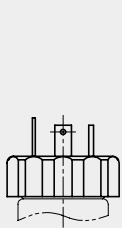
MIL-connector,
IP 67
Code: C6



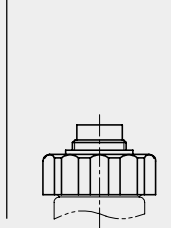
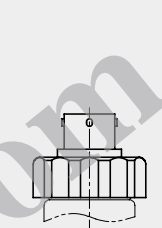
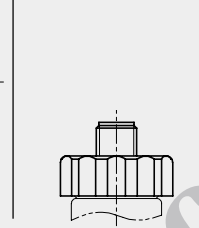
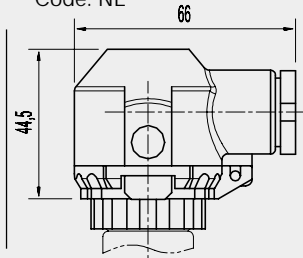
Circular connector
M 16x0,75, IP 67
Code: B5



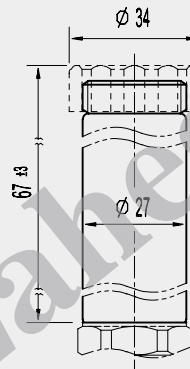
Flying leads,
IP 67
Code: DL



Snap Cap rotatable by 300°,
IP 67
Code: NL

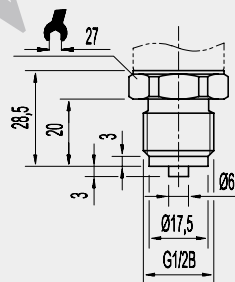


Case

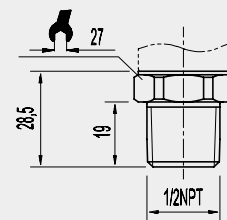


Pressure connections

G 1/2 B per EN 837
Code: GD

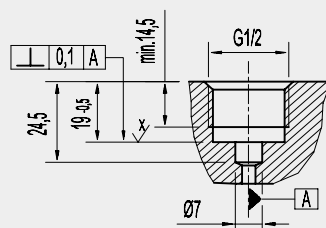


1/2 NPT per „Nominal size
for US standard tapered
pipe thread NPT“
Code: ND

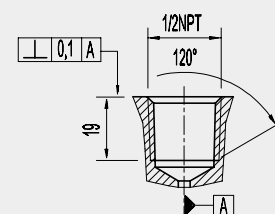


Weld-on-adaptors and sockets

G 1/2 B per EN 837-Z-G 1/2

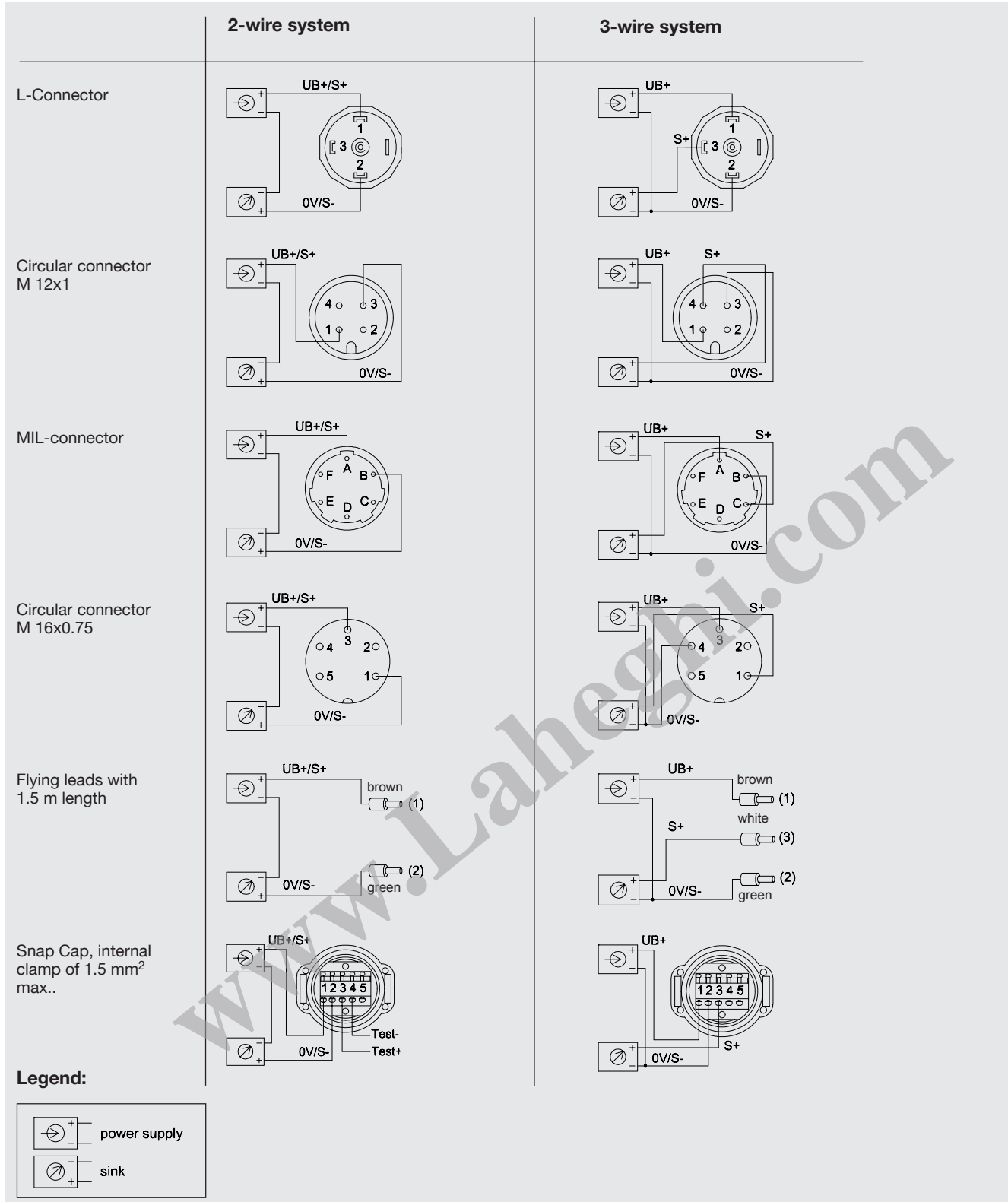


1/2 NPT per „Nominal size
for US standard tapered
pipe thread NPT“



*) Connectors are not included in delivery

Wiring details



Specifications and dimensions given in this leaflet represent the state of engineering at the time of printing. Modifications may take place and materials specified may be replaced by others without prior notice.



WIKAL Alexander Wiegand GmbH & Co. KG
 Alexander-Wiegand-Straße 30
 63911 Klingenberg/Germany
 Telefon (+49) 93 72/132-0
 Telefax (+49) 93 72/132-406
 E-Mail support-tronic@wika.de
 www.wika.de