

Safety Temperature Limiter Model SB15

WIKA Data Sheet TM 82.02

Applications

- Temperature monitoring for water, oil and gas
- Compressors
- Steam generators

Features

- High switching safety
- Temperature control and indication in one gauge



Safety Temperature Limiter, Model SB1560

Description

Test Symbol

TÜV Reg. Nr. STB 76487

Ingress Protection

Case IP 53, terminals IP 00

Nominal size

60, 80 mm

Accuracy class

±2% of measuring range at a reference temperature of 23°C on the case and capillary

Scale ranges

-100 ... 400 °C

Operating temperatures

Ambient: -40 ... +60 °C

Dial

White plastic with black lettering

Measuring principle

Bourdon tube system

Type of contact

1 fixed change over switch

Contacts

Microswitches

Switch rating

5 A non-inductive at max. 250V 40-60Hz

Standard switch differential

< 2% of measuring range

Electrical connection

0,8 x 6,3 mm terminal block or AMP plug connection

Case

Plastic, black

Type of mounting

Panel mounting with clamp

Capillary

Plastic covered	-40 °C ... +120 °C
Copper braided	-40 °C ... +350 °C
Stainless Steel	-100 °C ... +400 °C

Capillary length

max. 5 m

Capillary outlet

Lower back

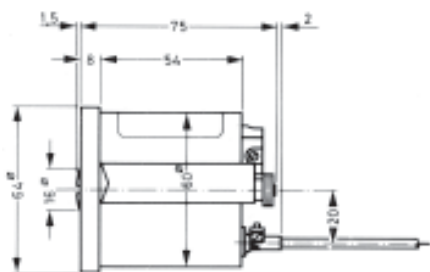
Optional extras

- Case steel
- Case square
- Panel mounting flange
- Protection cap IP 51 or IP 54
- Switch rating 10 A non-inductive at max. 250V 40-60Hz
- Other process connections

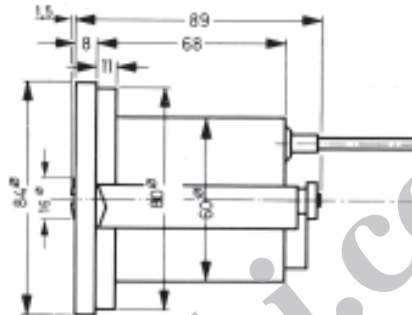
Dimensions in mm

Standard version

SB 1560

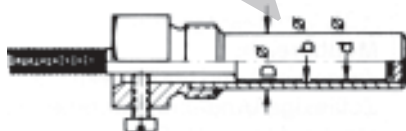


SB 1580

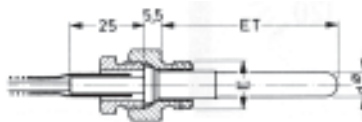


Temperature sensors and operating material according to DIN 3440									
Connection			Thermowell		Working Media				
Type	Dia-meter (mm)	Material	Type	Water up to 16 bar pressure	Thermal oil	Gas up to 200°C max. 16 bar pressure	Gas up to 200°C or over 16 bar pressure	Gas unpressured up to 350°C	Gas unpressured up to 400°C
No. 1	6	Cu.	Ms	X					
No. 2	6	Cu.		X		X		X	
No. 2	6	SS.				X	X	X	
No. 2	8	Cu.		X		X		X	
No. 2	8	SS.			X	X	X	X	X
No. 2	10	Cu.		X		X		X	
No. 2	10	SS.			X	X	X	X	X

Connection no. 1 with Thermowell



Connection no. 2 with male nut



Specifications and dimensions given in this leaflet represent the state of engineering at the time of printing. Modifications may take place and materials specified may be replaced by others without prior notice.



WIKAI Alexander Wiegand GmbH & Co. KG
 Alexander-Wiegand-Straße 30
 63911 Klingenberg / Germany
 Phone (+49) 93 72/132-0
 Fax (+49) 93 72/132-406
 E-Mail info@wika.de
 www.wika.de