

Ultra High Purity Attachable indicator with LED Model WUR-1

WIKA Data sheet PE 87.20

Applications

- Semiconductor and flat panel industry
- Microelectronic Technology
- Gas distribution systems
(Gas sticks, gas panels, bulk-gas supply)

Special features

- Top View or Front View
- Up to 2 Switch points freely programmable
- Ingress Protection IP 65
- 5 different units manually adjustable

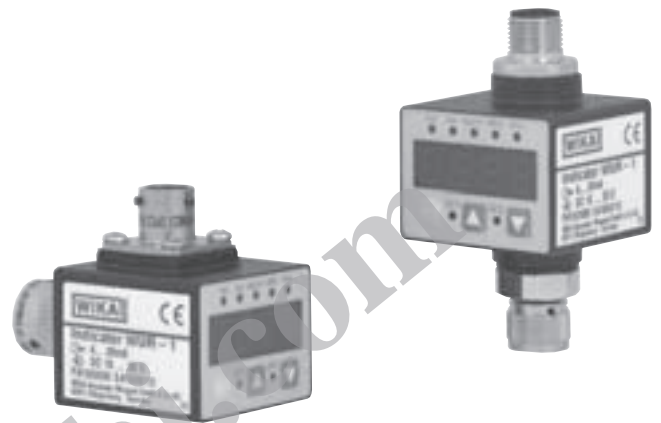


Fig. left WUR-1, Top View
Fig. right WUR-1, Front View

Description

Dynamic

An unique solution for a local display of the process pressure offers the attachable indicator model WUR-1. With this especially for the UHP-Market designed indicator a signal and freely adjustable switch points can be transmitted simultaneously.

Due to its universal programmability and simple mounting the attachable indicator can also be easily installed on pressure transmitters which are already in use. Its scale can be fully adjusted directly on site without master instrument.

Unit (psi, bar, kPa, MPa and kg/cm²), decimal point, display range, zero point and switch points can be adjusted via the control keys.

Comfortable

Power is directly supplied by the 4 ... 20 mA-loop, i.e. no extra power supply is required.

Practical

The seven millimetre high, red LED display is easy to read. In order to be able to adapt the indicator to the application, it is available in two different versions; Front View (connection to the transmitter at the bottom) or Top View (connection to the transmitter at the back).

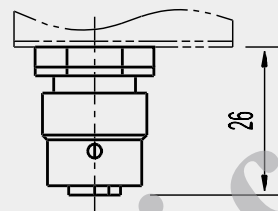
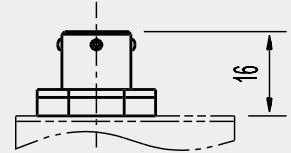
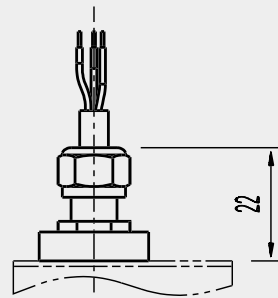
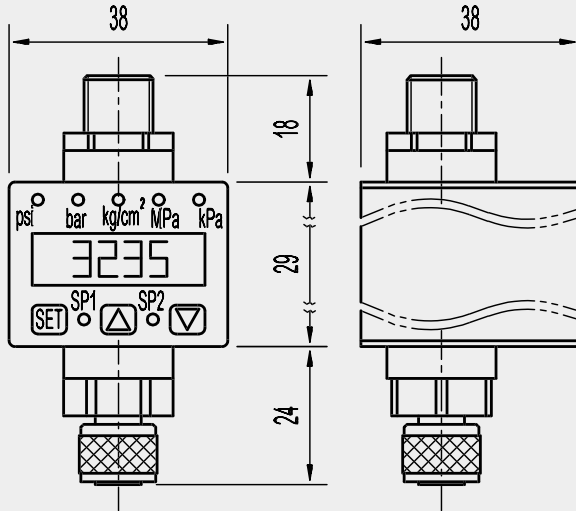
Dimensions in inch [mm]

Front View (connection to the transducer at the bottom)

Circular connector
M 12x1, 5-pin

Flying leads

MIL-connector,
4-pin



Circular connector
(female)
M 12x1, 4-pin

MIL-connector (female),
4-pin

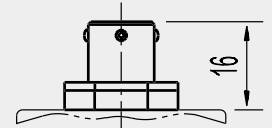
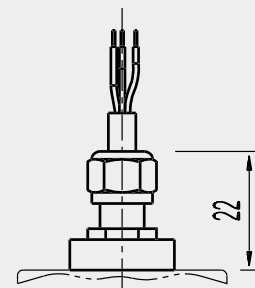
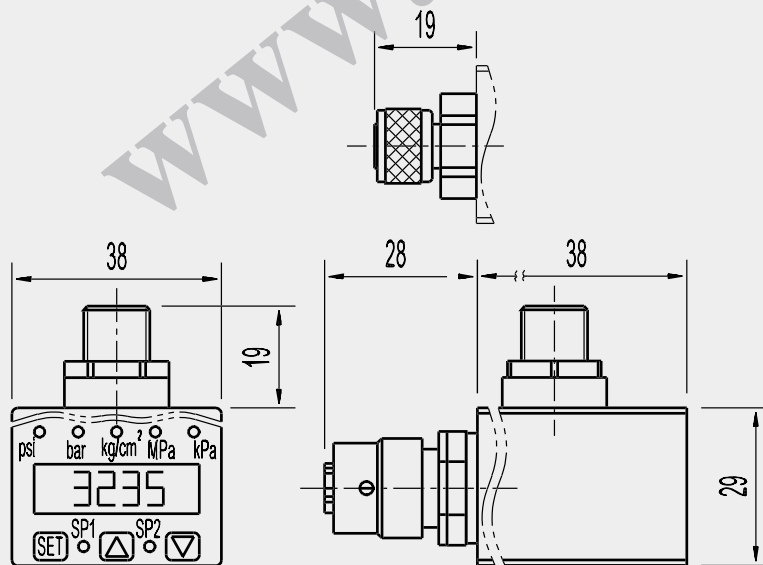
Top View (connection of the transducer at the back)

Circular connector
M 12x1, 5-pin

Circular connector (female) M 12x1,
4-pin


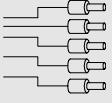
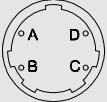
Flying leads

MIL-connector,
4-pin



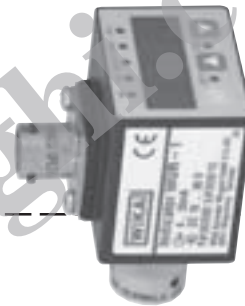
MIL-connector (female),
4-pin

Wiring details

Connector- Pin	2-wire Execution current	3-wire Execution voltage
Circular connector M 12x1, 5-pin		
	1 Power supply +UB, S+	Power supply +UB
	2 Switch out1	Switch out1
	3 Power supply 0V, S-	Power supply 0V, Switch ground, S-
	4 Switch ground (potential-free)	Signal S+
	5 Switch out2	Switch out2
Flying leads		
	red Power supply +UB, S+	Power supply +UB
	black Power supply 0V, S-	Power supply 0V, Switch ground, S-
	yellow Switch ground (potential-free)	Signal S+
	brown Switch out1	Switch out1
	orange Switch out2	Switch out2
MIL-connector, 4-pin		
	A Power supply +UB, S+	Power supply +UB
	B Switch ground (potential-free)	Signal S+
	C Switch out1	Switch out1
	D Power supply 0V, S-	Power supply 0V, Switch ground, S-




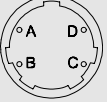
Output



Input

Fig. : WUR-1 Front View

Fig. : WUR-1 Top View

Connector- Pin	2-wire Execution current	3-wire Execution voltage
Circular connector (female) M 12x1, 4-pin		
	1 Power supply +UB, S+	Power supply +UB
	2 --	--
	3 Power supply 0V, S-	Power supply 0V, S-
	4 --	Signal S+
MIL-connector (female), 4-pin		
	A Power supply +UB, S+	Power supply +UB
	B --	Signal S+
	C --	--
	D Power supply 0V, S-	Power supply 0V, S-

Modifications may take place and materials specified may be replaced by others without prior notice.
Specifications and dimensions given in this leaflet represent the state of engineering at the time of printing.

